

ALPHETTA

143HP



DRIVE
THE CHANGE



ENERGREEN[®]
Professional Machines

ALPHETTA

ALPHETTA

No compromise on innovation and performance

Alphetta is ideal for cutting grass along roads and highways, being a perfect combination of agility, versatility and productivity.

Its new **super panoramic, rotating and suspended** cabin offers unrivalled visibility for safe and efficient operation.

The machine can **work in combination** with a cutting arm and a front tool, thus allowing time and results to be optimised.

The **speed-shift gearbox** ensures agile and quick movements, and its stability, while working and moving, makes it a reliable machine anywhere.

Alphetta is designed to meet all field requirements and is available in two versions, with T6.5 and T5.2 telescopic arms.





DRIVE THE
CHANGE
ENERGREEN

BORN TO UPGRADE
ROADSIDE GREEN
MAINTENANCE!

FEATURES

ALPHETTA

STABILITY

1

COMBINED
WORKING

2

NEW SUSPENDED
AND ERGONOMIC
CABIN

4

ROTATING
CABIN AND
PANORAMIC
WINDOWS

5

AGILITY AND
COMPACT

6

NEW
SPEED-SHIFT
GEARBOX

3

1 STABILITY

ALPHETTA

Unsurpassed stability

The engineering design that **Energreen** has dedicated to this vehicle is noteworthy. **Alphetta** is the first machine with working arm pivoted to the left of its centreline, thus offering and guaranteeing unsurpassed and extraordinary stability, both while working and moving. Ultimate safety. **Alphetta** can boast performance and reliability on any ground as its intrinsic characteristics.

**WORKING ARM PIVOTED
TO THE LEFT OF THE CENTRELINE**



2 COMBINED WORKING

ALPHETTA

Designed to change the way of working

Alphetta was designed to redefine roadside green maintenance and created with the idea of working in perfect synergy between its cutting arm and front tool, allowing large areas to be cut in a single pass, for optimised operating time and costs. Alphetta guarantees ultimate multiple functions thanks to its option of mounting a DIN plate or 3-point lifter at the front, making it compatible with a wide range of front tools. This versatility makes **Alphetta** the ideal choice for anyone looking for an agile and flexible machine with uncompromising performance.



3

SPEED-SHIFT GEARBOX

ALPHETTA

New speed-shift gearbox

Alphetta's speed-shift gearbox makes movements uniform and fast, allowing a smooth and progressive transition from 0 to 40 km/h.

Thanks to an electronically controlled synchroniser, the machine manages the gear change intelligently, for easier driving and optimised efficiency.

The front axle is equipped with an advanced electronic control unit. It manages the actual gear engagement based on the setting of the pump displacement and of the engine, ensuring that the shift only takes place under optimal conditions, without the need to stop. This system increases productivity, reduces fuel consumption and allows a maximum speed in first gear of up to 17 km/h.



4

NEW CABIN

ALPHETTA

New suspended and ergonomic cabin

Alphetta's new suspended cab is a concentrate of technology available to the operator according to a highly ergonomic concept.

The cabin suspension system accommodates the operator with unrivalled working comfort. When moving at 40 km/h, ground unevenness and vibrations are absorbed, ensuring smooth and linear travelling.

All main controls are positioned to allow maximum supervision over every movement of the working tools.

The new control armrest is designed for intuitive and safe operation.

The latest generation 7" vertical monitor provides all essential information on the machine operation.



5

360° VISIBILITY

ALPHETTA

Rotating cabin and panoramic windows

Total 360° visibility. The large, glazed surfaces combined with the 37° rotation of **Alphetta's** cabin enhance visibility and control of the working environment, reducing fatigue and operational stress of the driver. The panoramic glazed roof facilitates visibility during aerial arm work.

Display LCD ECI
Energreen Control Interface



**REAR
ATTACHMENT**



B

**ARM
ATTACHMENT**

A

**FRONT
ATTACHMENT**

ARM

T5.2

T6.5



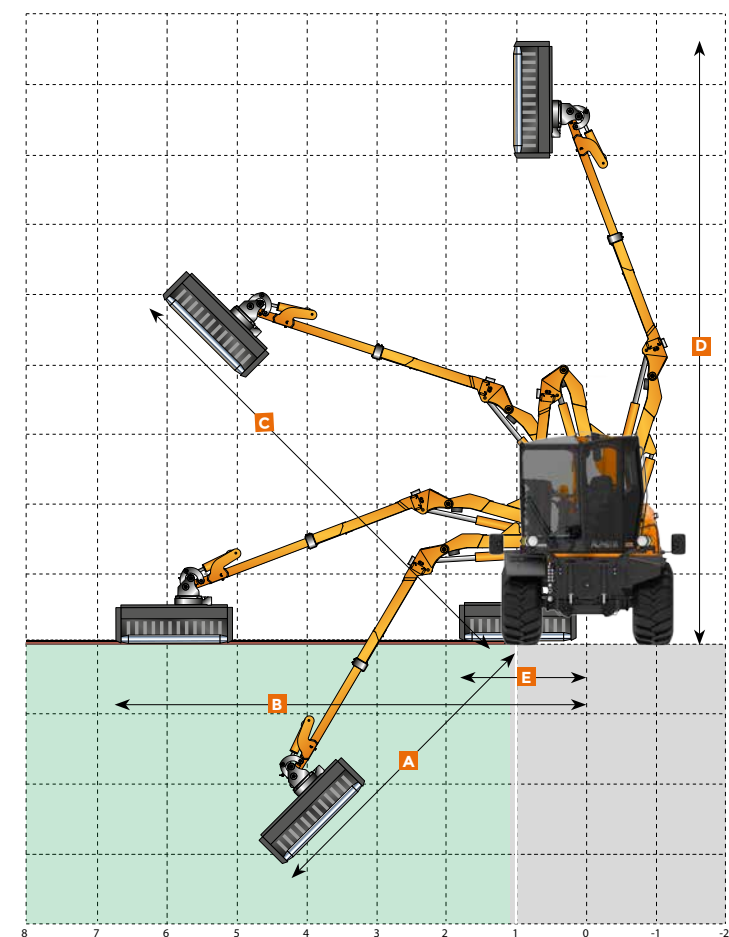
The **T** telescopic arm has been designed to work with an extension up to 6,7 meters and to reach a maximum height of 8,6 meters. Its particular geometry enhances the characteristics for road maintenance where you want a combination of mowing roadside and finishing work far from the roadside. The sturdy telescopic extension of the model **T6.5** allows greater work agility and maximum performance even in difficult situations.

Models: T 5.2 · T 6.5

FEATURES

- Telescopic arm up to 6,7 meters (B).
- Work on medium distances.
- Extended arm but with compact dimensions.
- Cutting of branches in vertical position.
- Versatile use of various tools.

ALPHETTA



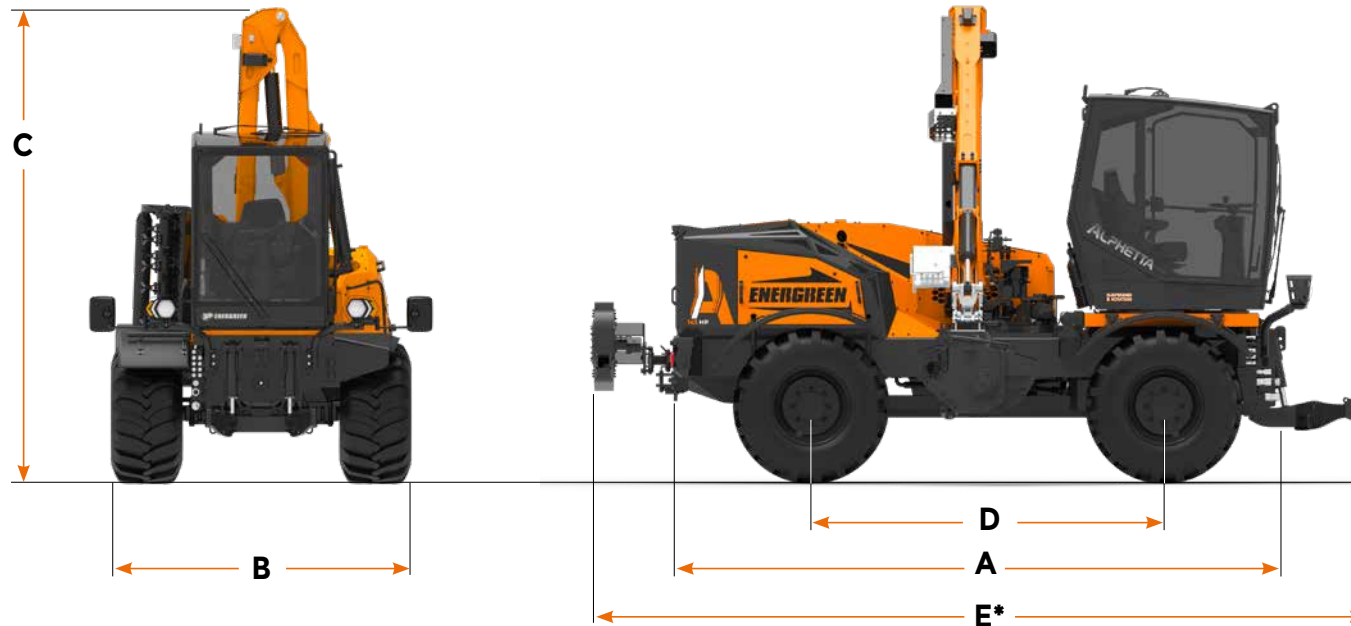
MOD.	A	B	C	D	E
T 5.2	3,29	5,57	5,80	7,46	1,80
T 6.5	4,51	6,73	6,98	8,61	1,80

Dimensions are to be considered with aflail head NEW SPEED 150 cm in the most extreme fixing position.

Technical and construction specifications may be subject to change without prior notice.

DIMENSIONS

ALPHETTA



TYRES

STANDARD
NOKIAN TRI2
460/65 R24



STRADALE
ROAD

OPTIONAL
ALLIANCE 331
600/50 R22.5



FUORI STRADA
OFF-ROAD

DIMENSIONS AND WEIGHT

A Length	mm 4420
B Width	
• Tyres 460 mm	mm 2302
• Tyres 600 mm	mm 2520
C Height	mm 3970
D Wheelbase	mm 2650
E* Total length	mm 5796
Weight	kg 8000

* The total length of the machine depend on the attachments fitted.

TECHNICAL DATA

ALPHETTA

CABIN

Cabin	Suspension and rotating up to 37°
Steering wheel	Adjustable
Joystick	Electronic
Air conditioning	Electronic
Rear glass	Darkened anti UV
Cabin door	Complitley glass
Adjustable seat	Air suspension
Power socket	12 V
Battery switch	Automatic
Cabin homologation	FOPS-ROPS
Monitor ECI 7" machine control and engine data	
USB socket	

ENGINE

Brand	Deutz TCD 3.6
Type	4 Cylinders Diesel
Power	143 HP (105 kW)
Injection	Common Rail
Exhaust emissions	EU 2016/1628 Stage V
Alternator	120 A.
Fuel tank capacity	175 litres
Reversible self cleaning fan	FLEXXAIRE®
Pre-heating air engine intake	
Air intercooler radiator	
Reinforced cooler radiator	

HYDRAULIC SYSTEM

Pumps and motors in closed circuits	
High flow pump	Piston
Trasmission pump	Piston
Front equipment pump	Piston
Pumps and motors in open circuits	
Arm movements	Gear
Brakes system	Gear
Steering system	Gear
Hydraulic distributor	Proportional
Hydraulic oil	Standard: ISOVG H46

TRASMISSION AND BRAKES

Transmission	Hydrostatic
Traction	4x4 (permanent)
4 steering wheels radius	3790 mm
Tires	Standard: 460/65 R22,5
Speed variation	0 - 40 km/h (continuous)
Speedshift Manual gearbox	2 gears
Wheel alignment	Electronic control
Front axle	Fixed
Rear axle	Oscillating
Steering axles	2 steering axles
Axle block	Front 100% - Rear 100%
Parking brake	Negative
Service brakes	6 discs for axle

Technical and construction specifications may be subject to change without prior notice.

MULTIFUNCTION MACHINE



DRIVE THE
CHANGE
ENERGREEN®



ENERGREEN®
Professional Machines



ALPHETTA

f y i in **ENERGREEN.IT**



SELF-PROPELLED HYDROSTATIC MACHINES



ENERGREEN[®]

Professional Machines

ENERGREEN S.P.A. · Via Sabbioni, 16 · 36026 Poiana Maggiore (Vicenza) · Italy
Tel. +39 0444 1511200 · Fax +39 0444 1511252 · commerciale@energreen.it · www.energreen.it

MACCHINE E ATTREZZATURE PROFESSIONALI
PROFESSIONAL MACHINES AND ATTACHMENTS

